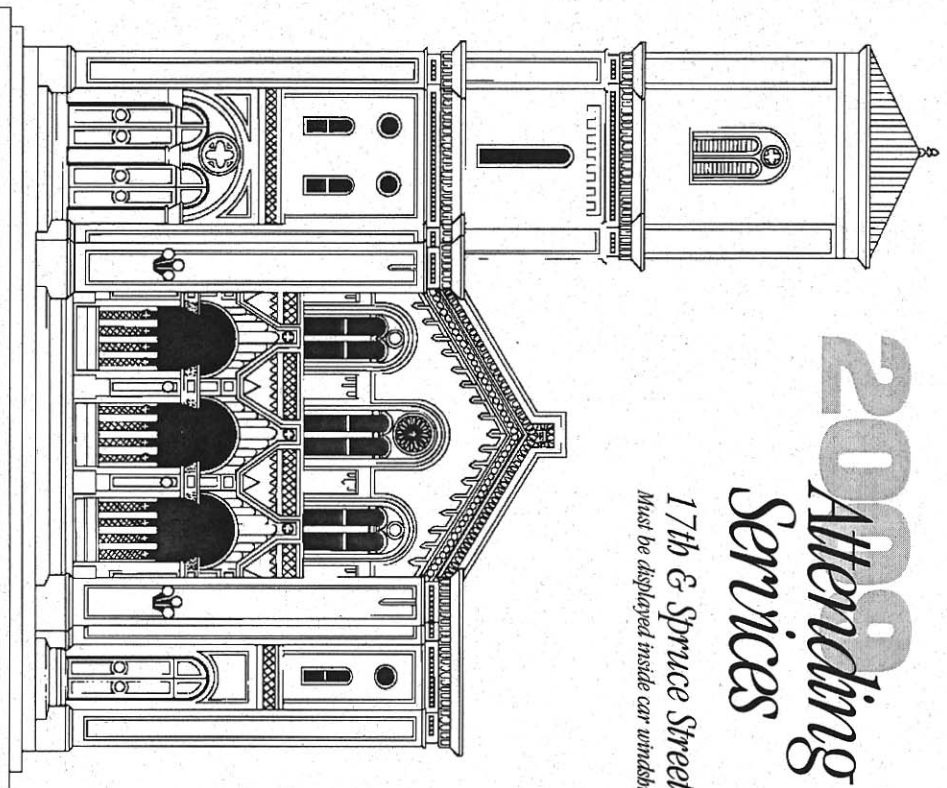


2000 Attending Services

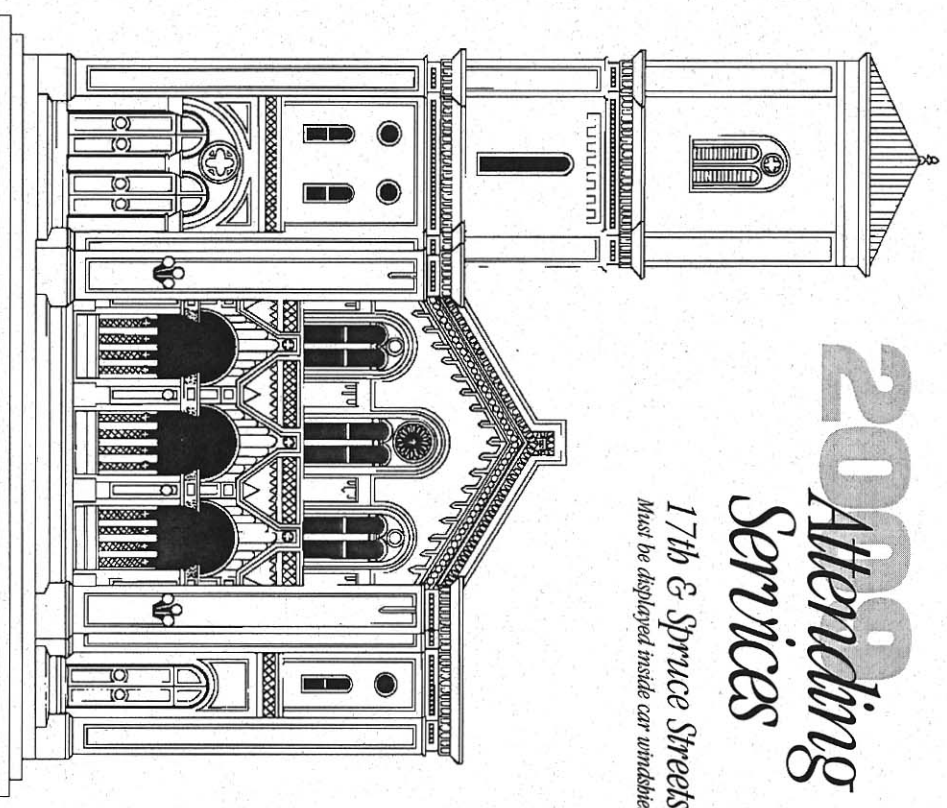
17th & Spruce Streets
Must be displayed inside car windshield



Tenth Presbyterian Church

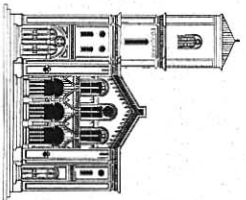
2000 Attending Services

17th & Spruce Streets
Must be displayed inside car windshield



Tenth Presbyterian Church

2009 Parking Guidelines



Tenth
Presbyterian
C h u r c h

17th & Spruce Streets

Senior Minister
Dr. Philip G. Ryken

Mailing Address
1701 Delancey Place
Philadelphia, PA 19103
Phone: 215.735.7688
Fax: 215.735.3960
Email: welcome@tenth.org
Web: www.tenth.org

The City of Philadelphia generously permits parking by the congregation in designated areas near the church. Parking is permitted in "No Stopping Any Time" and "No Parking Any Time" areas within the locations listed below.

The city will ticket and may tow cars that are parked in handicap spaces, in front of driveways or garages, in bus stops, on any sidewalk, within 15 feet of fireplugs or 25 feet of corners, or without placards.

Sundays, 8:00 am–10:00 pm

Both sides of Spruce and Pine from 16th to 19th

Both sides of Lombard from 16th to 17th

Both sides of 16th and 17th from Spruce to Pine

Both sides of 18th from Rittenhouse Square to Lombard

Special Events

Parking privileges will be granted for Saturday weddings, Good Friday service and concert, PCRT (6:30 pm–11 pm Friday; 8 am–11 pm Saturday), Thanksgiving service, 12/23 and 12/24 Christmas Eve services, and New Year's Eve. Weddings and other special events may be added throughout the year; time will start one hour before and end one hour after the event or as noted; must check church website to confirm events and locations to be added throughout the year.

Both sides of Spruce from 17th to 18th

Both sides of 17th from Spruce to Pine

Both sides of 18th from Spruce to Pine

Handicapped Parking

On Sundays the area directly in front of the church on Spruce Street is reserved for handicapped persons.

Free Street Parking

Within a 5-minute walk south of church easy, free, on-street legal street parking (no placards or stamped tickets required) is available 17th to 21st on Bainbridge, Fitzwater, Catherine, and surrounding blocks.

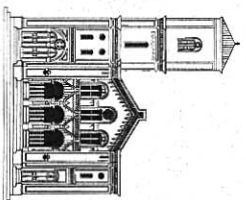
Garage and Lot Parking

The Penn parking garage (entrance just beyond 18th Street on South Street) offers \$5 parking during Tenth Sunday events, weekday evening meetings (must enter after 5:00 pm), and scheduled Saturday events. Validate your ticket at Tenth's Delancey or Spruce Street entrances. The lot at 17th and Pine is \$7 on Sundays only, with stamped tickets. The lot at 15th and Naudain is \$4 on Sundays only, with stamped tickets. The lot at 15th and South is \$4 on Sundays, with stamped tickets (see website for additional times)

Tickets

If you receive a parking ticket but were parked according to these guidelines, put a copy in Nancy Hala's box before you leave (use church copy); *write your name, address, telephone number, and email on the same sheet. Keep the original ticket in your personal files until the matter is resolved.* You may also fax (215.735.3960) or mail a copy of your ticket within a day.

2009 Parking Guidelines



Tenth
Presbyterian
C h u r c h

17th & Spruce Streets

Senior Minister
Dr. Philip G. Ryken

Mailing Address
1701 Delancey Place
Philadelphia, PA 19103
Phone: 215.735.7688
Fax: 215.735.3960
Email: welcome@tenth.org
Web: www.tenth.org

The City of Philadelphia generously permits parking by the congregation in designated areas near the church. Parking is permitted in "No Stopping Any Time" and "No Parking Any Time" areas within the locations listed below.

The city will ticket and may tow cars that are parked in handicap spaces, in front of driveways or garages, in bus stops, on any sidewalk, within 15 feet of fireplugs or 25 feet of corners, or without placards.

Sundays, 8:00 am–10:00 pm

Both sides of Spruce and Pine from 16th to 19th

Both sides of Lombard from 16th to 17th

Both sides of 16th and 17th from Spruce to Pine

Both sides of 18th from Rittenhouse Square to Lombard

Special Events

Parking privileges will be granted for Saturday weddings, Good Friday service and concert, PCRT (6:30 pm–11 pm Friday; 8 am–11 pm Saturday), Thanksgiving service, 12/23 and 12/24 Christmas Eve services, and New Year's Eve. Weddings and other special events may be added throughout the year; time will start one hour before and end one hour after the event or as noted; must check church website to confirm events and locations to be added throughout the year.

Both sides of Spruce from 17th to 18th

Both sides of 17th from Spruce to Pine

Both sides of 18th from Spruce to Pine

Handicapped Parking

On Sundays the area directly in front of the church on Spruce Street is reserved for handicapped persons.

Free Street Parking

Within a 5-minute walk south of church easy, free, on-street legal street parking (no placards or stamped tickets required) is available 17th to 21st on Bainbridge, Fitzwater, Catherine, and surrounding blocks.

Garage and Lot Parking

The Penn parking garage (entrance just beyond 18th Street on South Street) offers \$5 parking during Tenth Sunday events, weekday evening meetings (must enter after 5:00 pm), and scheduled Saturday events. Validate your ticket at Tenth's Delancey or Spruce Street entrances. The lot at 17th and Pine is \$7 on Sundays only, with stamped tickets. The lot at 15th and Naudain is \$4 on Sundays only, with stamped tickets. The lot at 15th and South is \$4 on Sundays, with stamped tickets (see website for additional times)

Tickets

If you receive a parking ticket but were parked according to these guidelines, put a copy in Nancy Hala's box before you leave (use church copy); *write your name, address, telephone number, and email on the same sheet. Keep the original ticket in your personal files until the matter is resolved.* You may also fax (215.735.3960) or mail a copy of your ticket within a day.